



# New Message Switching for Major Indonesian Airline

Solution Design Team

JTI Mandiri

# About Us

- **PT. Jasa Teknologi Informasi Mandiri** established in early 2002
- Over 250 employees located at several clients and city
- Current active Clients :
  - Bank Industry
    - Citibank
    - Bank Mandiri
    - ANZ
    - Bank Rakyat Indonesia
  - Air Transport Industry
    - Garuda Indonesia
    - Egypt Air
    - PT. JAS
    - Indonesian Custom
  - Others
    - Total Bangun Persada
    - PT. Moratel
    - Fashion TV, etc.



- Business Area
  - IT Managed Services
  - Network Infrastructure
  - Software Solutions
  - Professional Services



# Previous Client Infrastructure: Costly Legacy Environment

- ▶ IBM Mainframe Z10
- ▶ TypeB connection to SITA, Arinc & Amadeus
- ▶ Handle 4millions+ Messages / month
- ▶ Integrate with Backend application
  - ▶ Cargo
  - ▶ AFTN
  - ▶ Flight Ops
  - ▶ Flight Plan
  - ▶ Finance Application
  - ▶ Aircom / AGDL
  - ▶ BRS
  - ▶ Web Telex
  - ▶ APIS Crew
  - ▶ RO TTY Printer





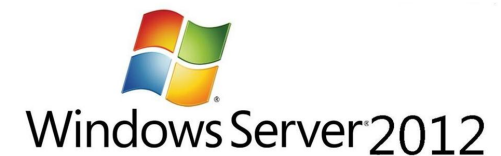
# Requirement by Client

- ▶ **Cost Saving more than 75%**
- ▶ Secure connection
- ▶ Accessible from any device
- ▶ Replace proprietary messaging clients (SITATEX)
- ▶ Future format ready
- ▶ Modern architecture including products
- ▶ **Migration within 4 weeks**



# Solution

- ▶ EDIfly Server
  - ▶ HP Proliant DL380p Gen8
    - ▶ 2 x 300GB Harddisk
    - ▶ 64GB memory
    - ▶ 4 NICs
  - ▶ Windows 2012 Cluster Server
  - ▶ 4 x 1TB External Storage (RAID 5)
- ▶ Zimbra mail server as Webtelex
  - ▶ Linux Centos 6.2
- ▶ Pop3Print as Telex printer application
- ▶ 3 TypeB MATIP connections
- ▶ 19 Backend applications connected



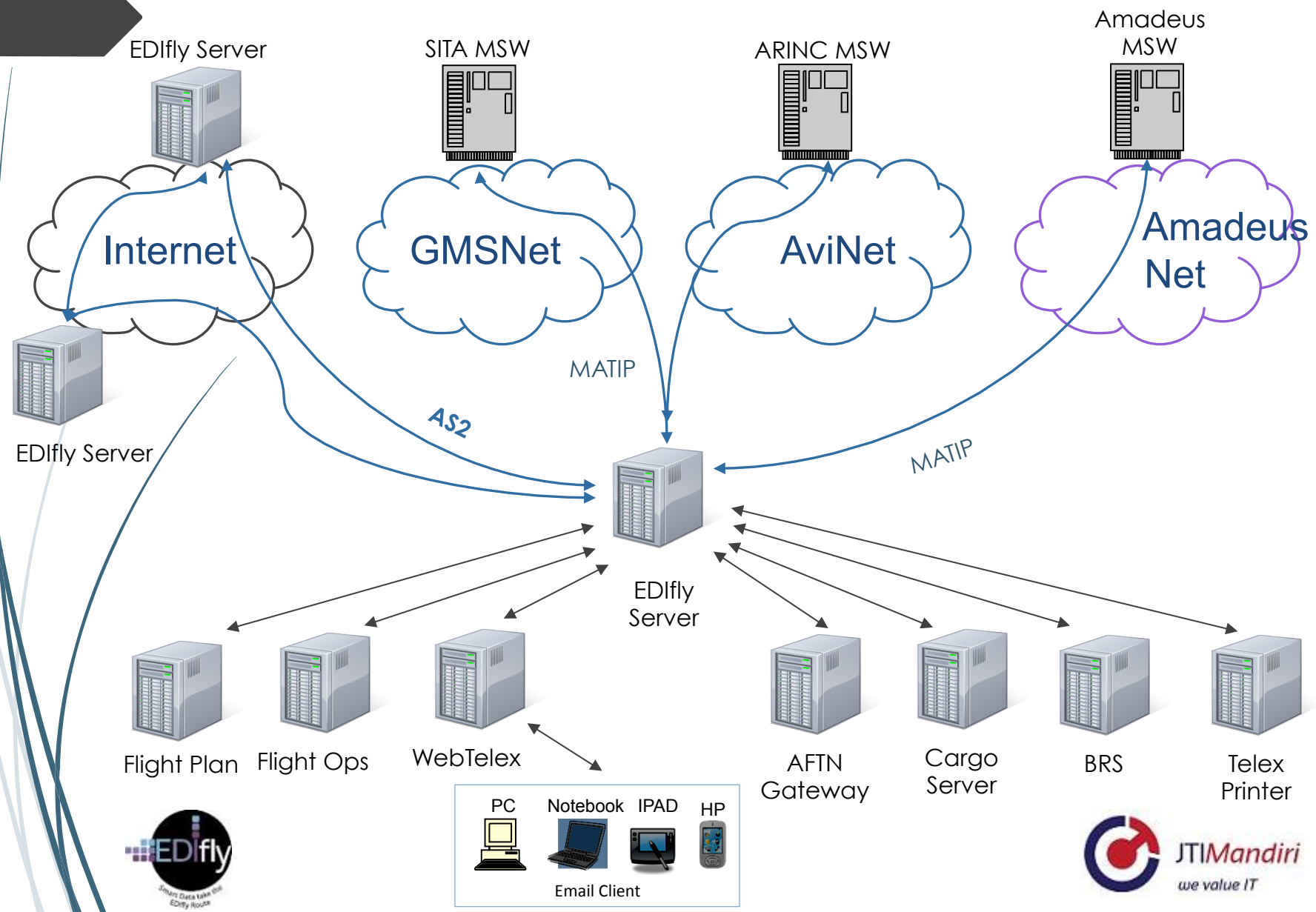


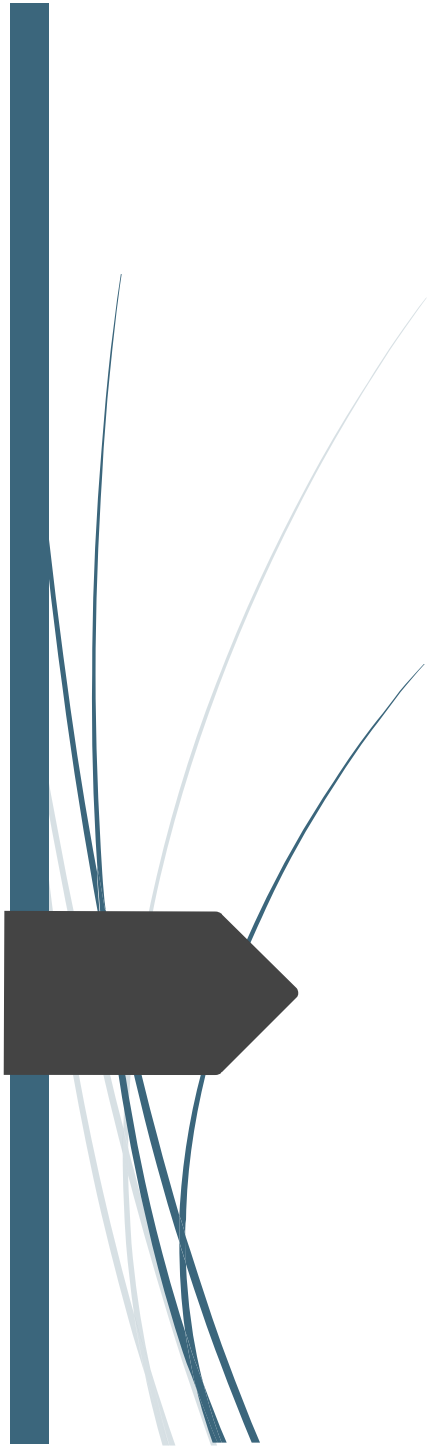
# Implementation Experience

- ▶ On-time cut power off of mainframe
- ▶ Stable operation since January 2015
- ▶ Multiple FTP-connections replaced
- ▶ Customized message outputs
- ▶ Legacy TTY printer replaced
- ▶ Client can configure rule-based outputs of message



# Topology





# Thank You

Reference can be provided upon request